



PORTFOLIO



ONLY EVEN



## EDUCATION



### Tel Aviv University, Israel

*M.A, History and Philosophy of Science and Ideas, summa cum laude*

Thesis: "The Sublime Object of Nazi Architecture: On the Modern Sublime and its Manifestations in Nazi Urban Plan for Berlin". Advisor: Prof. Moshe Zuckermann

October 2016

### Tel Aviv University, Israel

*Bachelor of Architecture, magna cum laude*

August 2010

### Thelma Yellin Highschool of the Arts

*Visual Arts Major*

July 2002

## PROFESSIONAL EXPERIENCE



**Licensed Architect, Israel Ministry of Labor (#11546513) since june 2014**

**Registered Architect, Israel Ministry of Labor since november 2010**

### Independant Artist, Tel Aviv, Israel

2002-Today

Over the past 17 years I have completed numerous drawings and painting in various techniques, including oil, acrylic, crayons, graphite and charcoal. In recent years my artistic work has focused on architectural drawings, and I have sold works to both private clients and architecture firms.

## ARTIST STATEMENT



As an artist who is also an architect, my work focuses on architectural objects, taken out of their urban context and presented to the viewer as a static image that is all gestalt. The primary medium I engage with is pencil drawing, allowing refined details, textures and strong tonality - all of which enhance a hyper-reality and an 'objective' point of view on the depicted subject.

The *White City, Black City*-series drawings are two-dimensional documentations of deteriorated historic buildings in Tel Aviv-Jaffa, prior to their conservation. In professional architectural documentation, buildings were traditionally drawn in their ideal reconstructed state, demonstrating the beauty of their original proportions, fresh materials and details. I prefer to showcase them in the sublimity of their decay, embracing a dialectical approach towards the old as novelty (the *Old Young Portraits* series presents similar themes). I take inspiration from Slavoj Žižek's concept of the sublime object - an everyday object chosen to represent what is beyond representation, thus becoming alluring yet intimidating. However, once approaching the sublime object from close enough, it loses its enchanting power and turns back into an ordinary object.

Over the past decade my professional focus was on my architectural career, and at this point I'm shifting focus back to art. The drawings I'm currently working on (in progress) combine hyperrealism with surreal elements or environments, taking the architectural object away from its original surrounding and situating it in a new context. The inspiration to these works are the fantastic drawings of 18th-century architects Ledoux and Boullée.

## List of Works

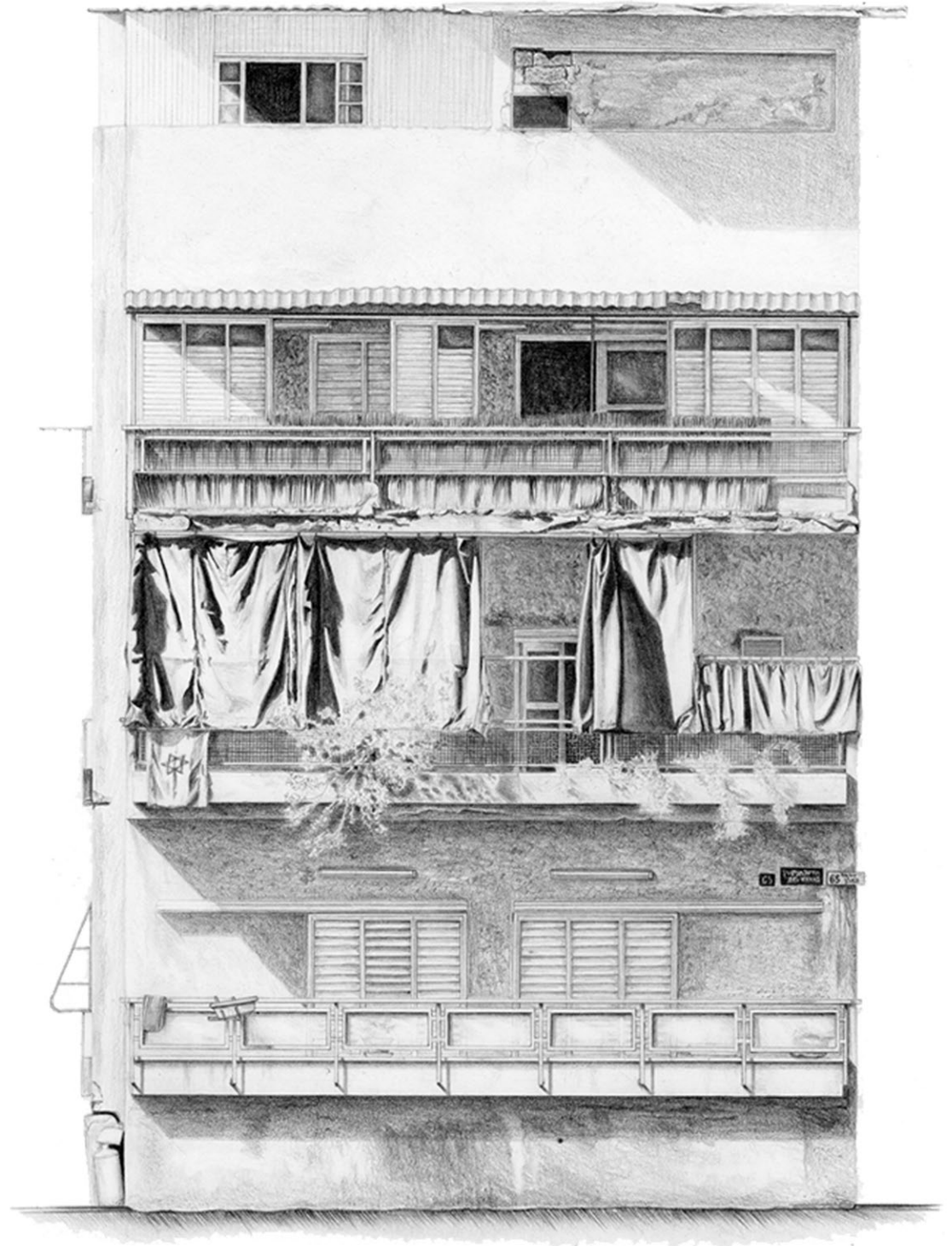
- 01** *Mendelsohn Street Tel Aviv, East Façade*  
2018, graphite pencil on paper, 29.5X21cm
- 02** *Mendelsohn Street Tel Aviv, North Façade*  
2018, graphite pencil on paper, 29.5X42cm
- 03** *Well House in Jaffa, North Façade*  
2010, graphite pencil on paper, 17X50cm
- 04** *Well House in Jaffa, South Façade*  
2010, graphite pencil on paper, 17X50cm
- 05** *Well House in Jaffa, West Façade*  
2011, graphite pencil on paper, 15X50cm
- 06** *Old Ottoman Railway in Jaffa*  
2017, graphite pencil on paper, 20X100cm
- 07** *Mikve Israel Building, South Façade*  
2019, graphite pencil on paper, 29.5X40cm
- 08** *Hevrat Shas Street Tel Aviv, West Façade*  
2016, graphite pencil on paper, 12.5X28cm
- 09** *Hevrat Shas Street Tel Aviv, North Façade*  
2016, graphite pencil on paper, 12.5X43cm
- 10** *Point of Reference in Tempelhof, Germania*  
2013, graphite pencil on paper, 30X33cm
- 11** *A Portrait of the Artist as a Smiling Girl*  
2002, black ink on paper, 140X100cm
- 12** *A Portrait of the Artist as a Colored Girl*  
2002, gouache stamping on paper, 140X100cm
- 13** *Infant 1.0*  
2003, graphite pencil on paper, 70X60cm
- 14** *Infant 2.0*  
2005, graphite pencil on paper, 70X65cm
- 15** *Show Me on the Teddy Where the Pencil Touched*  
2017, graphite pencil on paper, 55X70cm
- 16** *Tli'yat Avodot*  
2013, oil on canvas, 50X70cm
- 17** *Bare Bones*  
2004, acrylic on canvas, total 170X80cm
- 18** *The Enigma of*  
2005, acrylic on canvas, 50X70cm
- 19** *Alternative History in Rabin Square (sketches)*  
2008, crayons on paper, 21X29.5cm
- 20** *Urban Screening*  
2008, mixed media
- 21** *Yafa Scenes (sketches)*  
2009, crayons on paper, 15X21cm

WHITE CITY, BLACK CITY

OLD YOUNG PORTRAITS

TEL AVIV ALTERNATIVE

# WHITE CITY I BLACK CITY #01



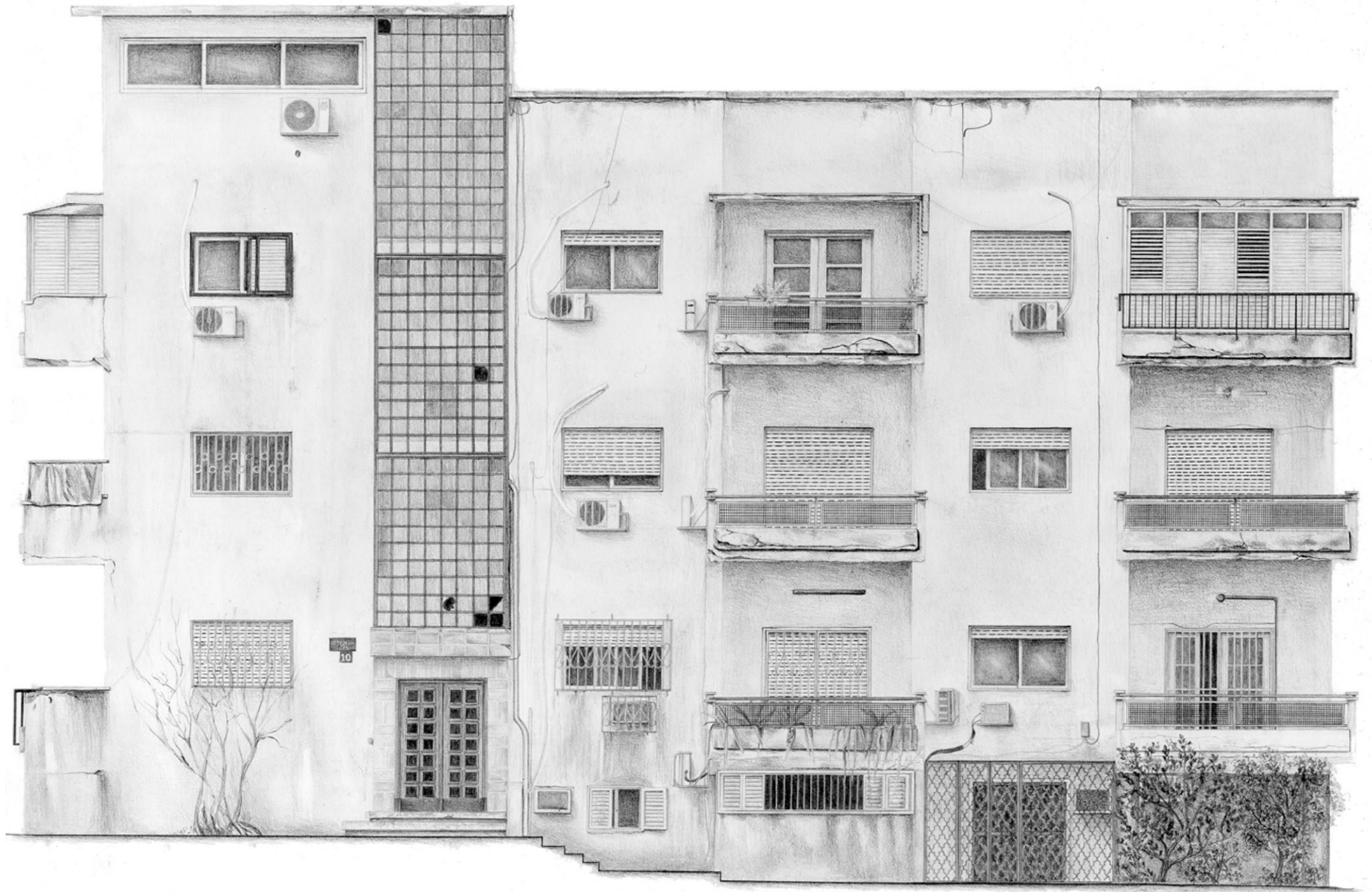
*Mendelsohn Street Tel Aviv, East Façade*

2018, graphite pencil on paper, 29.5X21cm

Drawing of the facade of a 1930's international-style building, located in the white city of Tel-Aviv, depicted in its decay.



# WHITE CITY | BLACK CITY #02



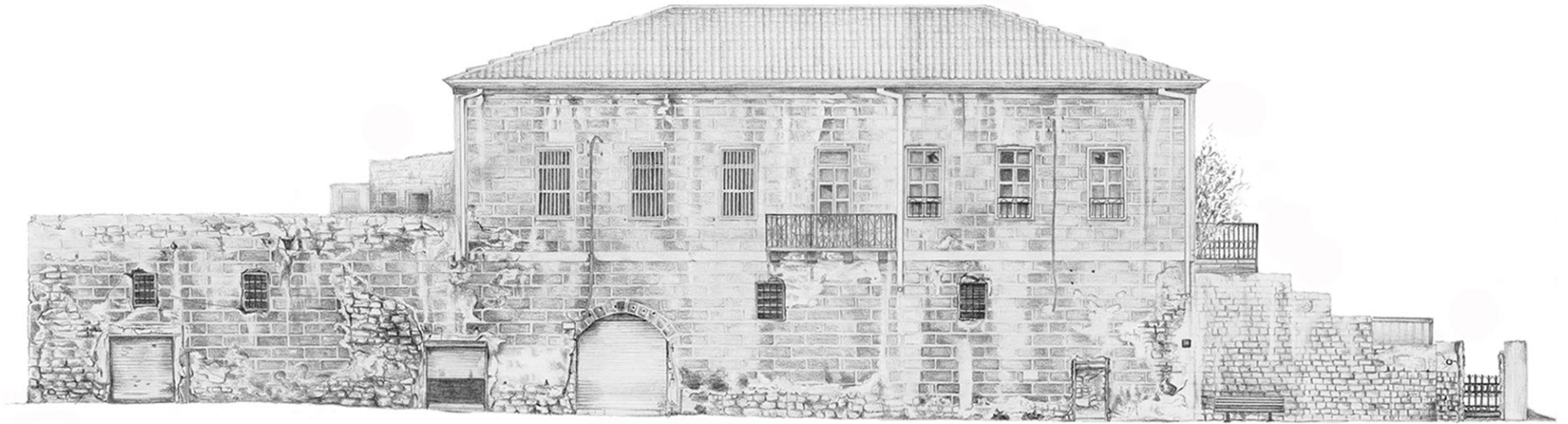
*Mendelsohn Street Tel Aviv, North Façade*

2018, graphite pencil on paper, 29.5X42cm

Drawing of the facade of a 1930's international-style building, located in the white city of Tel-Aviv, depicted in its decay.



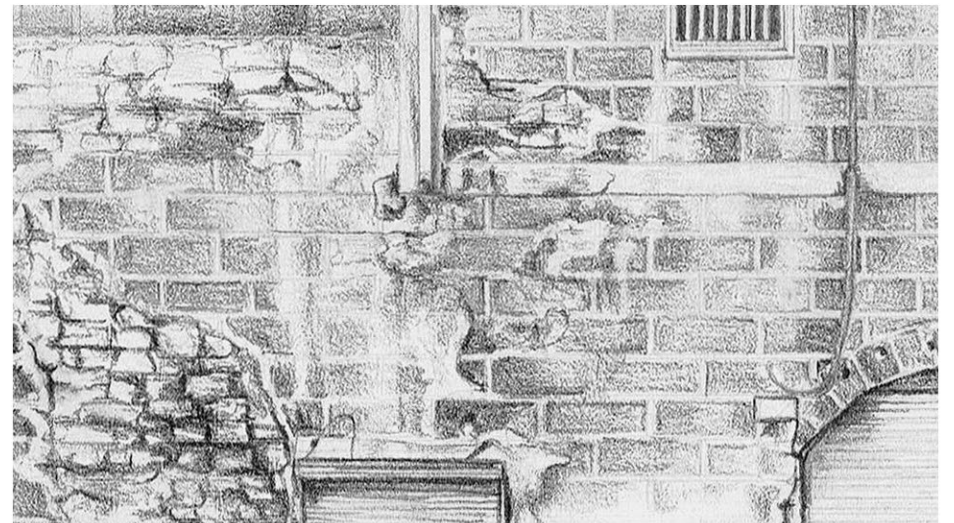
# WHITE CITY | BLACK CITY #03



*Well House in Jaffa, North Façade*

2010, graphite pencil on paper, 17X50cm

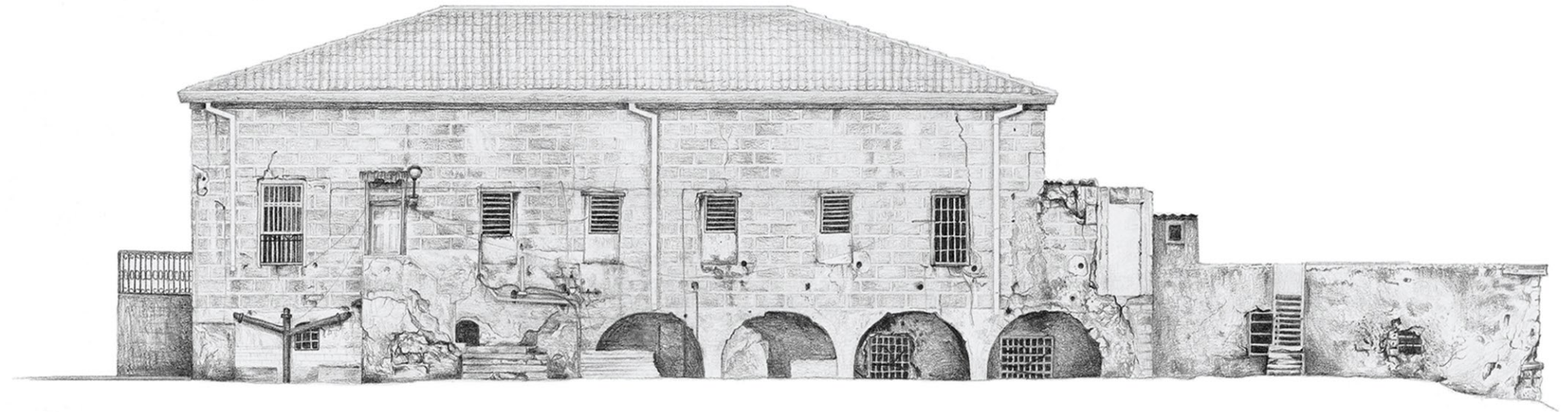
Remnants of a former Jaffa mansion - one of many which were once situated in the heart of orchards - and today are left in their ruin.



*detail*



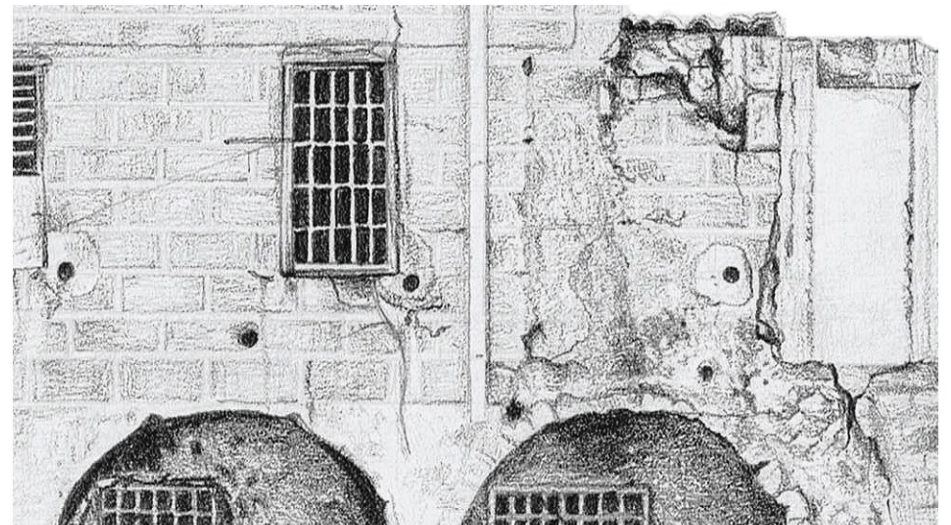
# WHITE CITY | BLACK CITY #04



*Well House in Jaffa, South Façade*

2010, graphite pencil on paper, 17X50cm

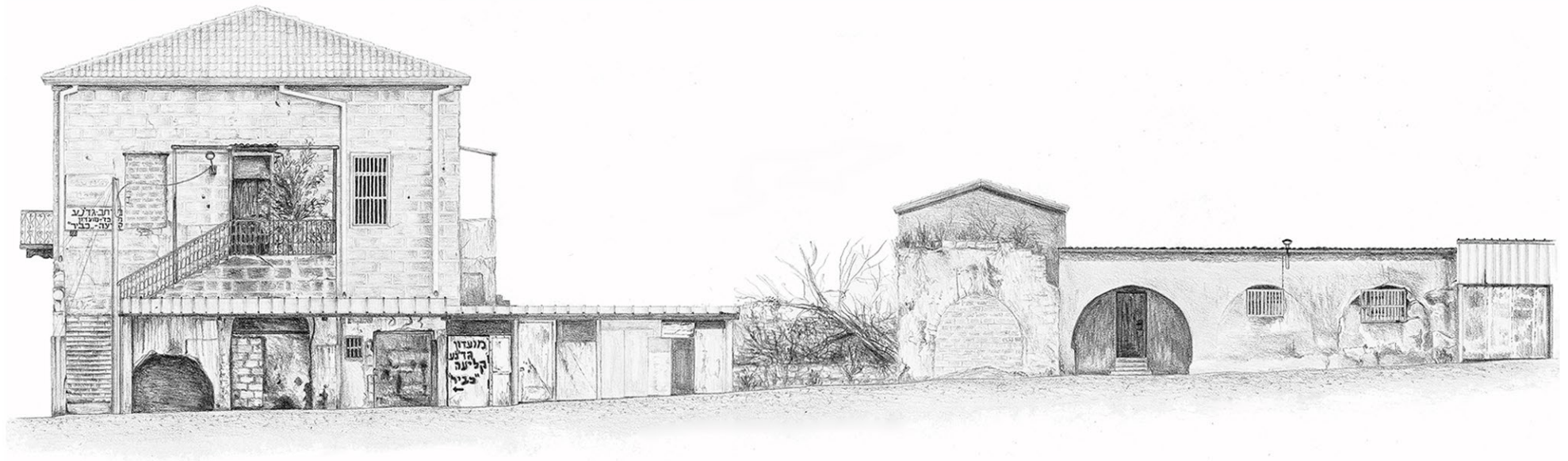
Remnants of a former Jaffa mansion - one of many which were once situated in the heart of orchards - and today are left in their ruin.



*detail*



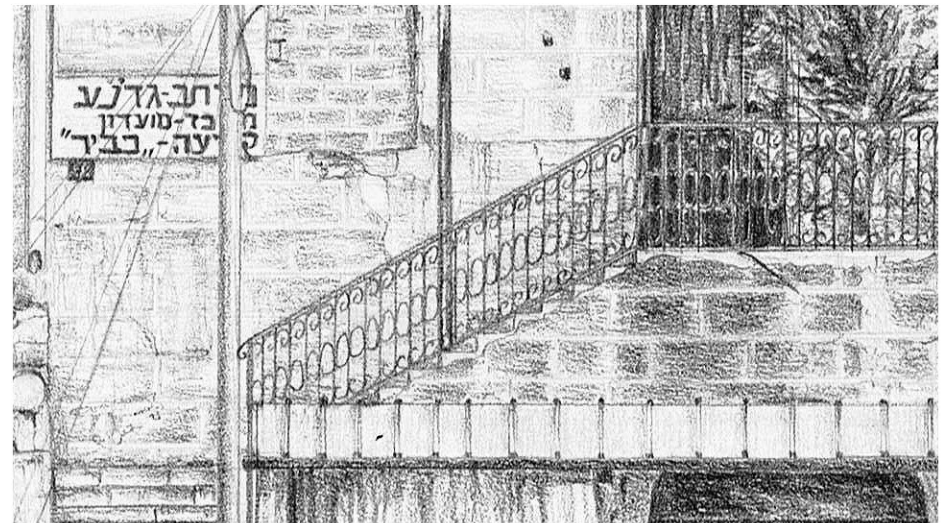
# WHITE CITY | BLACK CITY #05



*Well House in Jaffa, West Façade*

2011, graphite pencil on paper, 15X50cm

Remnants of a former Jaffa mansion - one of many which were once situated in the heart of orchards - and today are left in their ruin.



*detail*



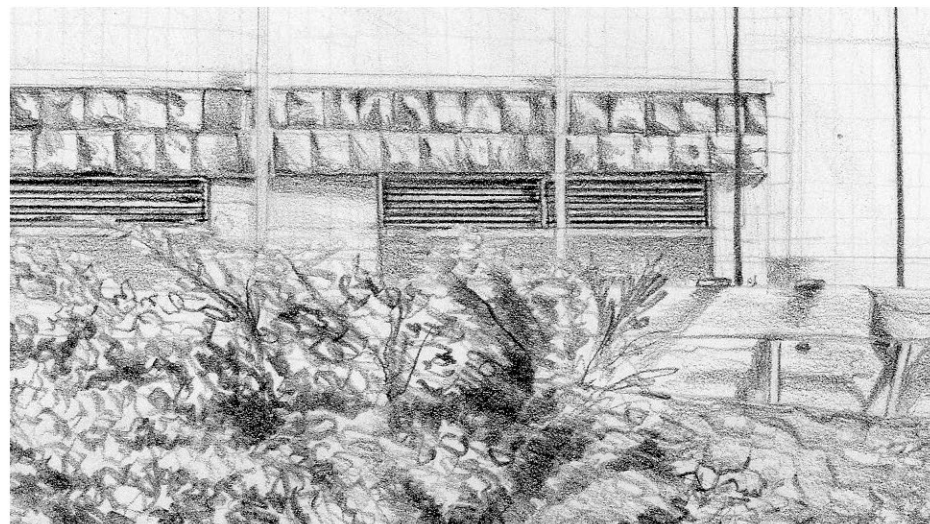
# WHITE CITY | BLACK CITY #06



## *Old Ottoman Railway in Jaffa*

2017, graphite pencil on paper, 20X100cm

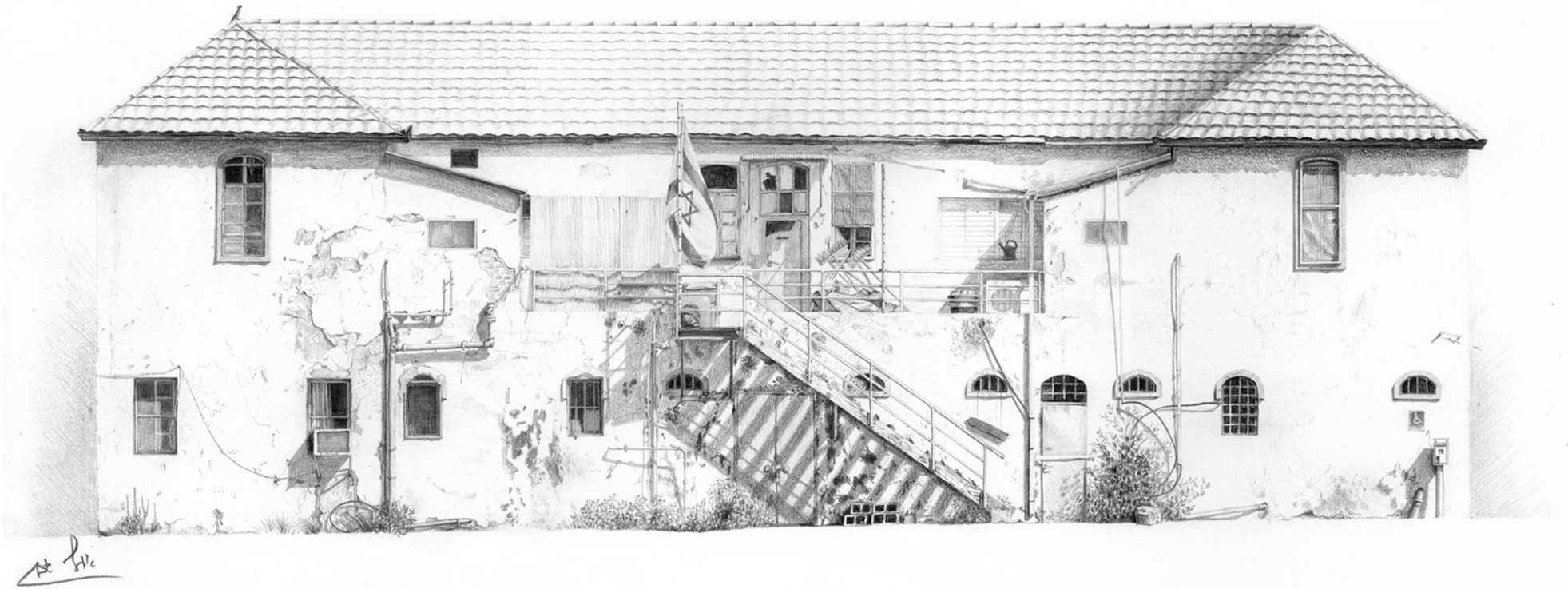
Retaining wall of the old railway, covered with vegetation. The buildings perform as a static scenery, the shadow of a tower hovering behind.



*detail*



# WHITE CITY | BLACK CITY #07



*Mikve Israel Building, South Façade*  
2019, graphite pencil on paper, 29.5X40cm



*detail*



# WHITE CITY I BLACK CITY #08

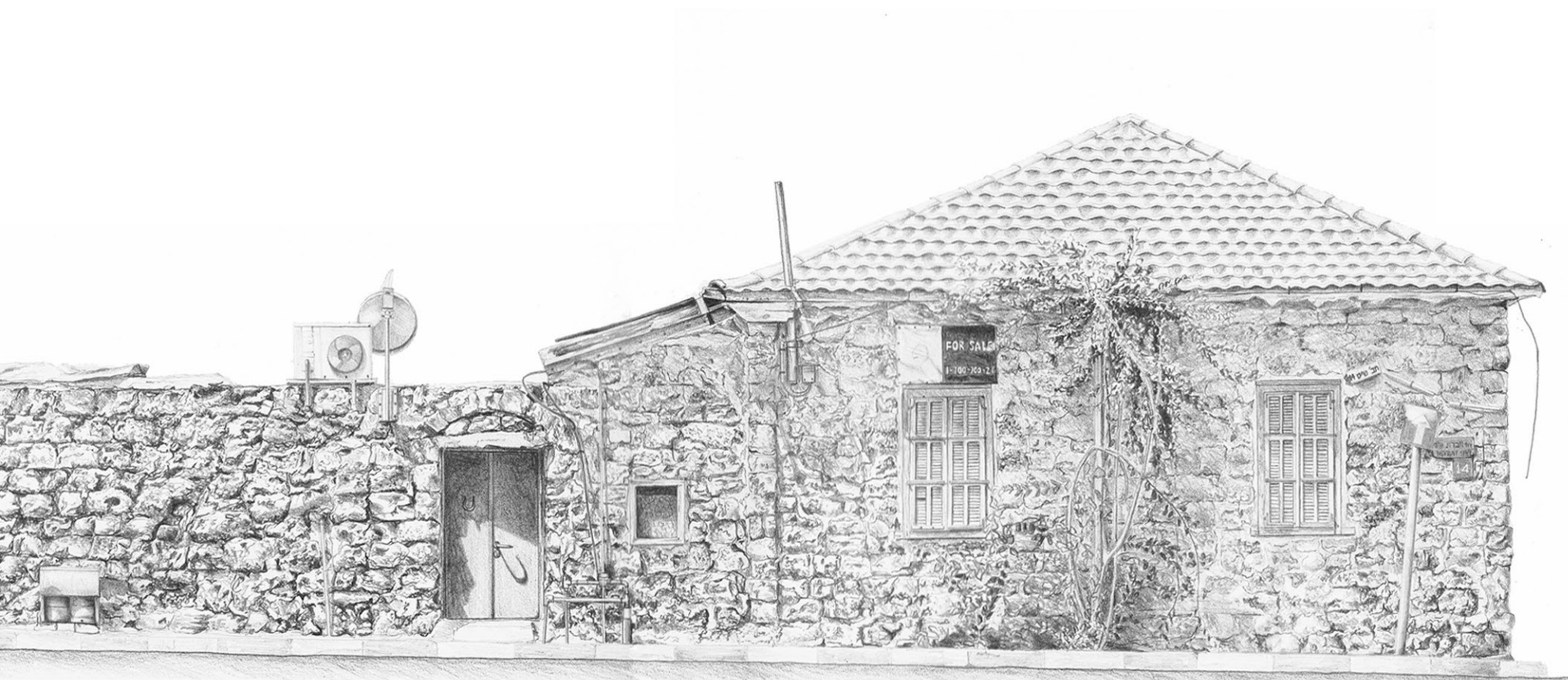


*Hevrat Shas Street Tel Aviv, West Façade*

2016, graphite pencil on paper, 12.5X28cm



# WHITE CITY I BLACK CITY #09

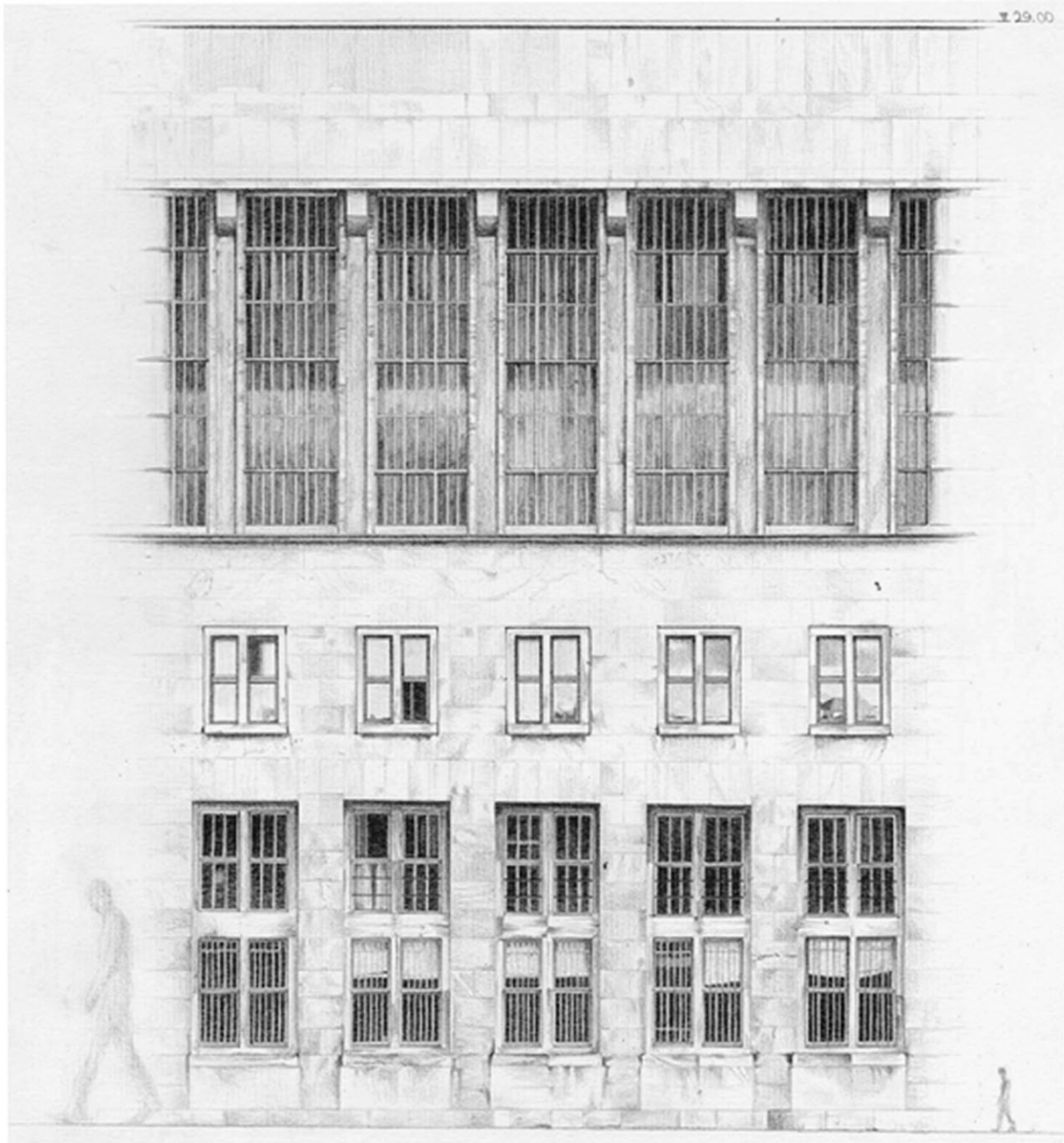


*Hevrat Shas Street Tel Aviv, North Façade*

2016, graphite pencil on paper, 12.5X43cm



# WHITE CITY I BLACK [other]CITY #10



*Point of Reference in Tempelhof, Germania*

2013, graphite pencil on paper, 30X33cm



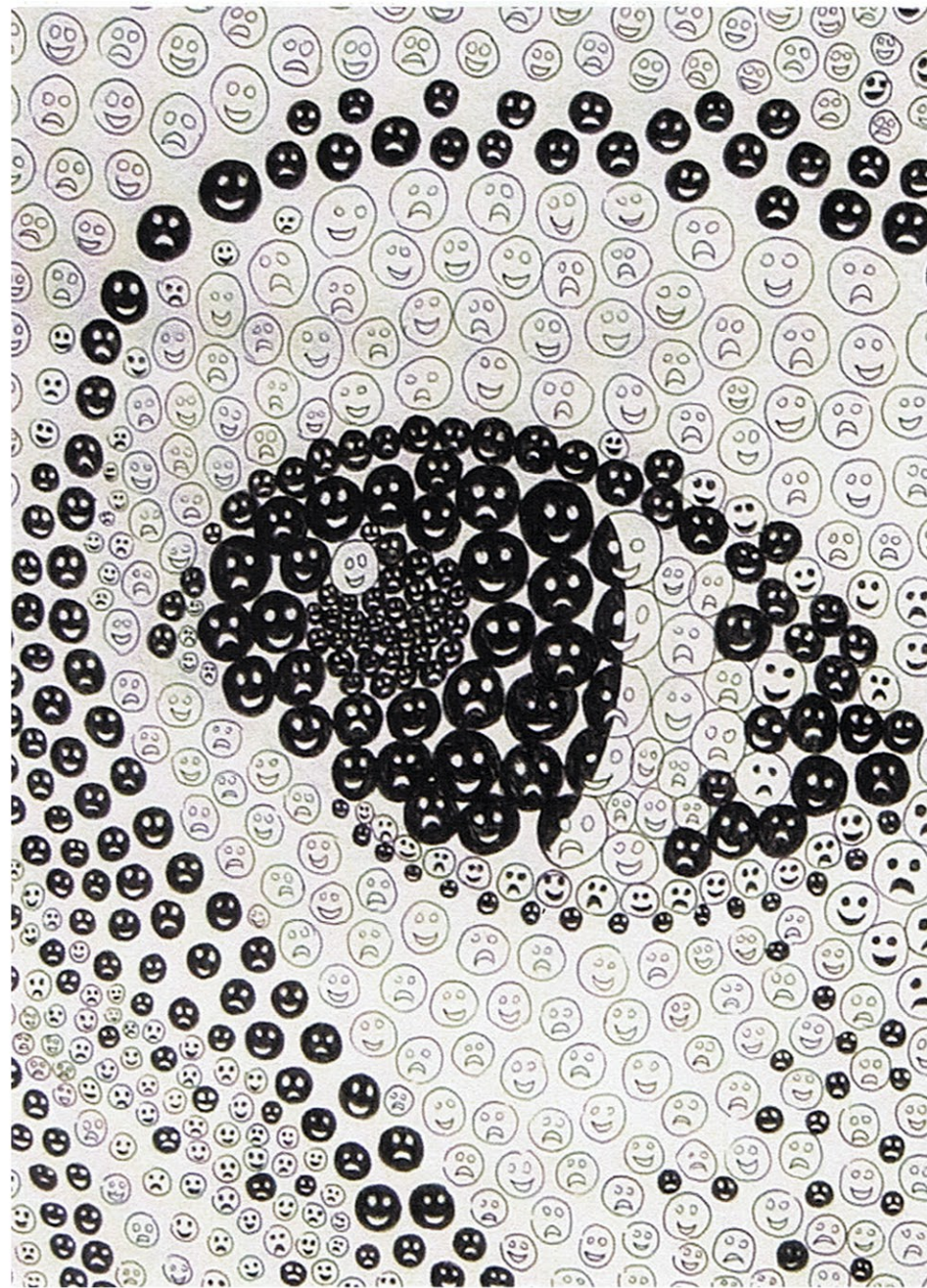
# OLD YOUNG PORTRAITS #11



*A Portrait of the Artist as a Smiling Girl*

2002, black ink on paper, 140X100cm

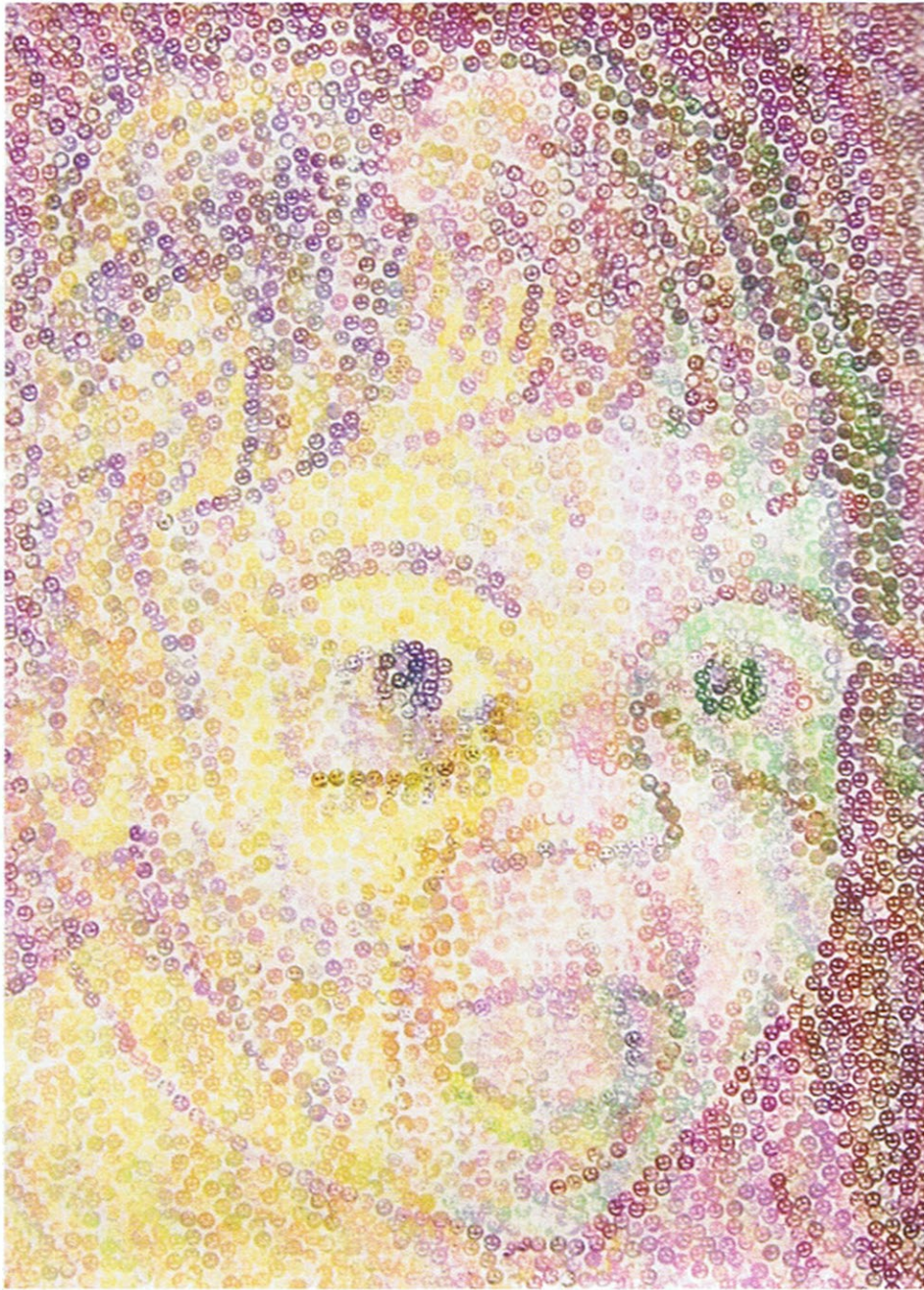
1st in a series of 3. After Chuck Close



*detail*



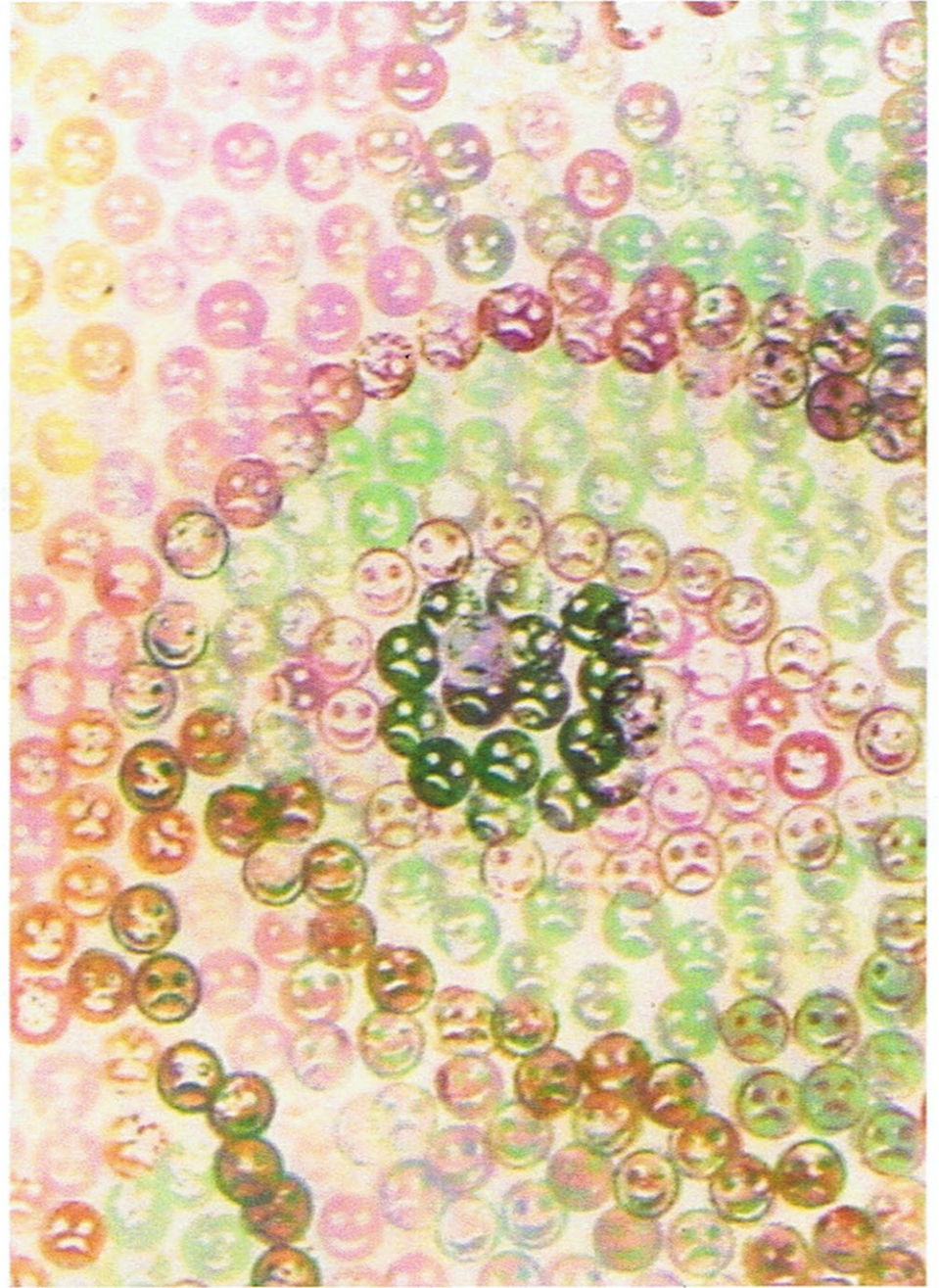
# OLD YOUNG PORTRAITS #12



*A Portrait of the Artist as a Colored Girl*

2002, gouache stamping on paper, 140X100cm

3rd in a series of 3. After Chuck Close



*detail*

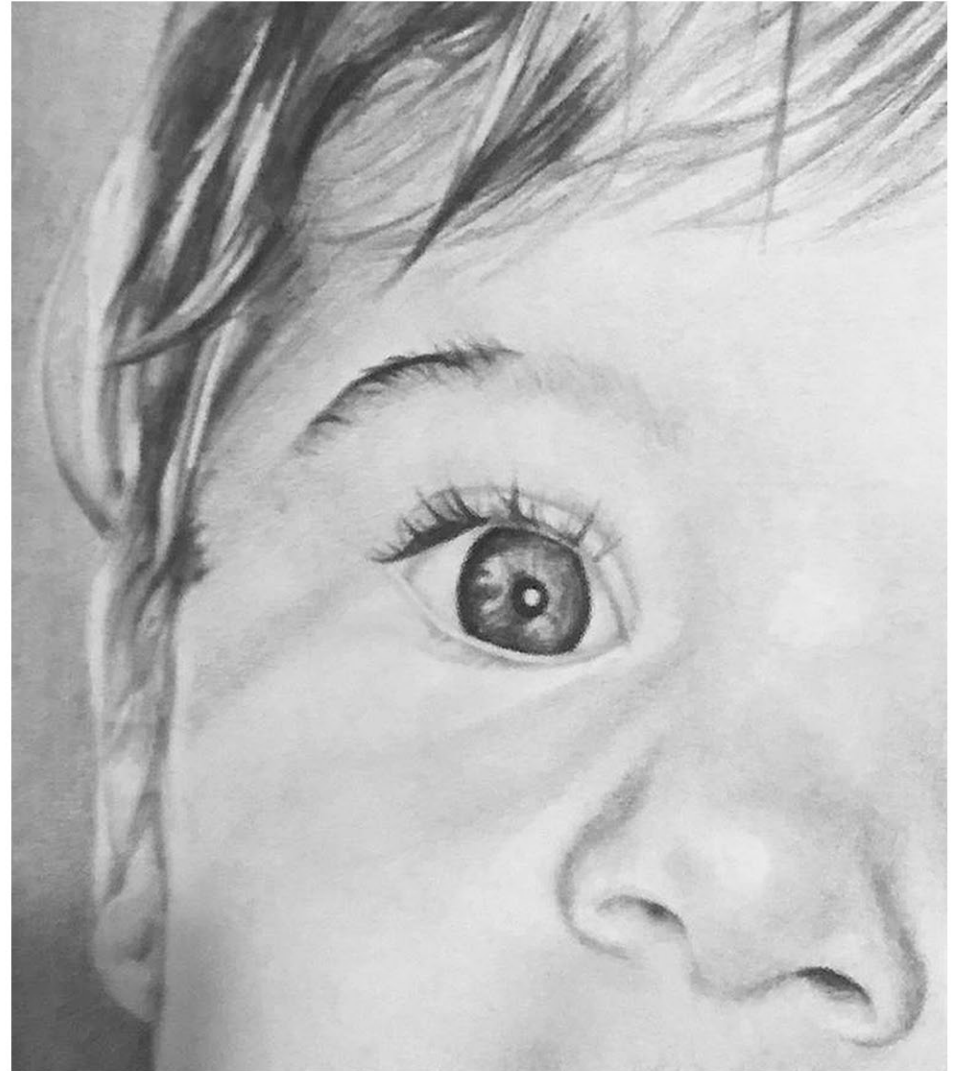


# OLD YOUNG PORTRAITS #13



*Infant 1.0*

2003, graphite pencil on paper, 70X60cm



*detail*

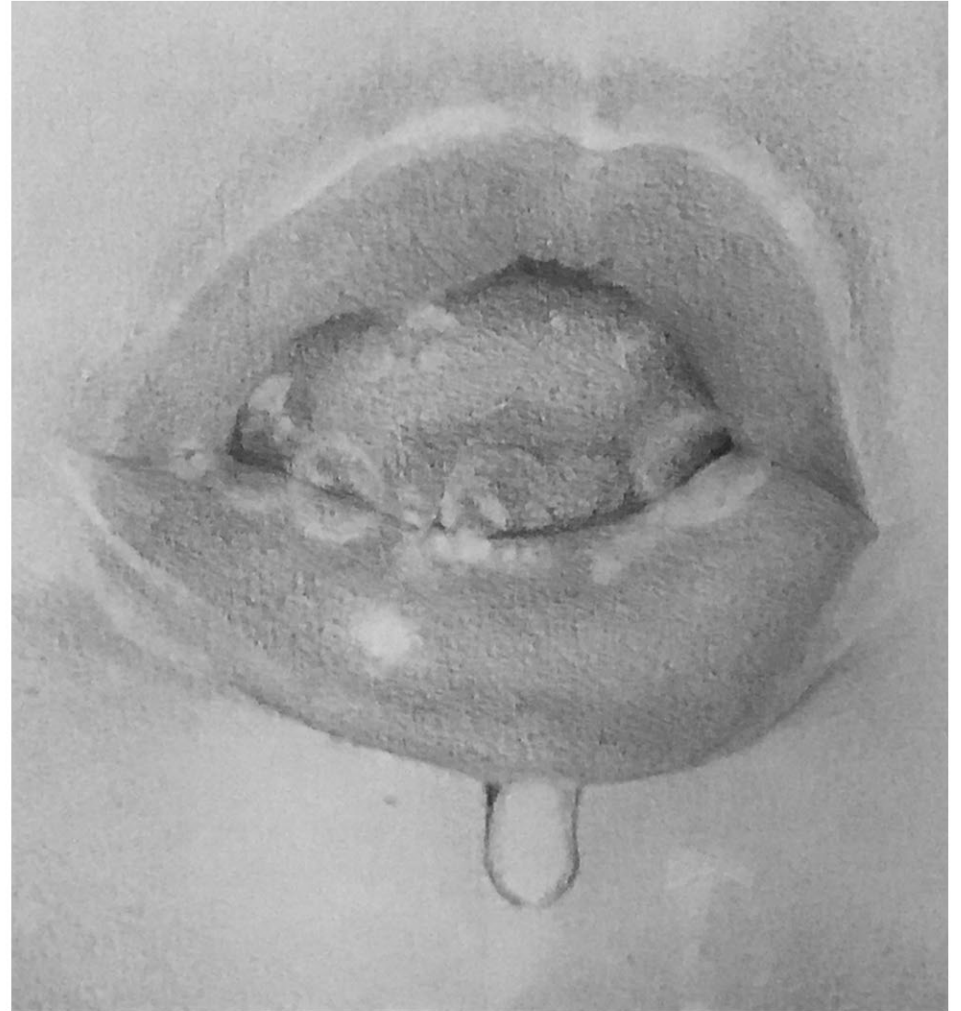


# OLD YOUNG PORTRAITS #14



***Infant 2.0***

*2005, graphite pencil on paper, 70X65cm*



***detail***

# OLD YOUNG PORTRAITS #15



*Show Me on the Teddy Where the Pencil Touched You*  
2017, graphite pencil on paper, 55X70cm



*detail*



## OLD YOUNG PORTRAITS #16



*Tli'yat Avodot*

2013, oil on canvas, 50X70cm



# OLD YOUNG PORTRAITS #17



fragments #1,2

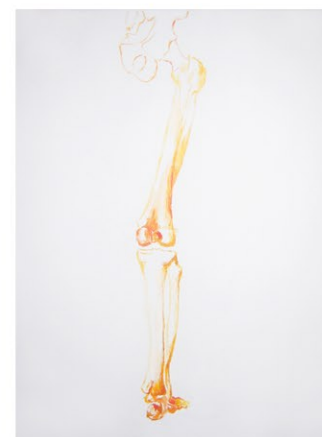
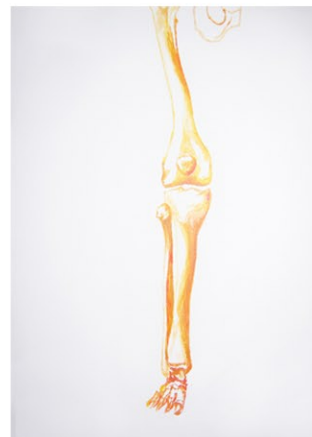


**Bare Bones**

2004, acrylic on canvas, total 170X80cm



fragment #4





## TEL AVIV ALTERNATIVE #18



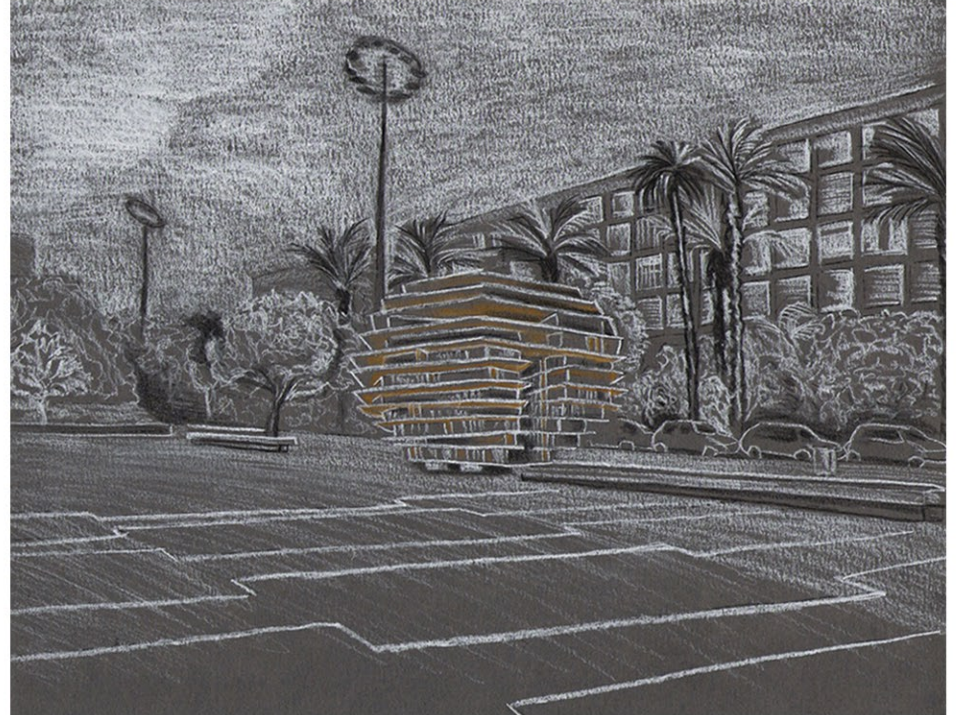
*The Enigma of*

2005, acrylic on canvas, 50X70cm

After de Chirico



# TEL AVIV ALTERNATIVE #19

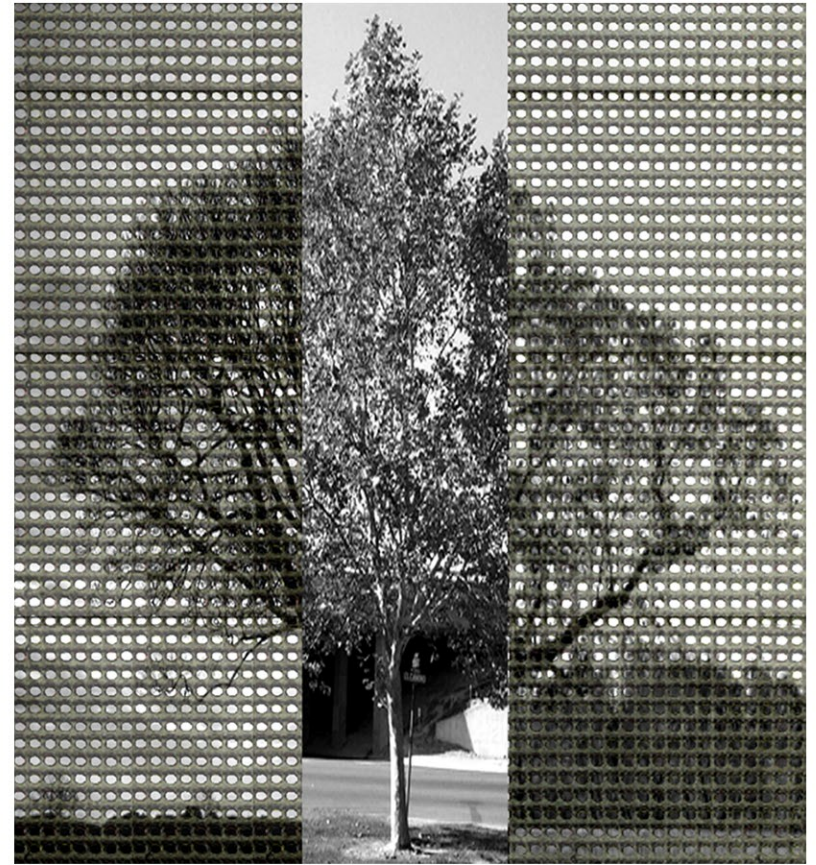
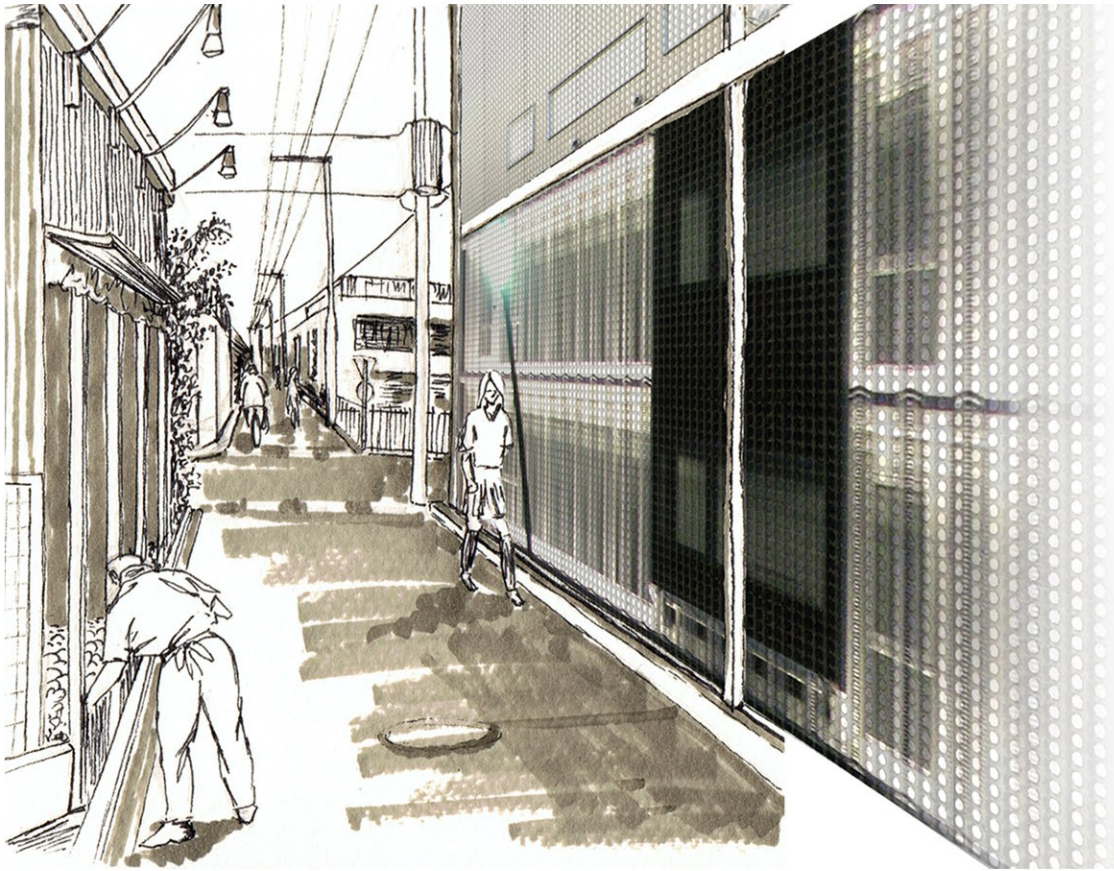


*Alternative History in Rabin Square (sketches)*

2008, crayons on paper, 21X29.5cm



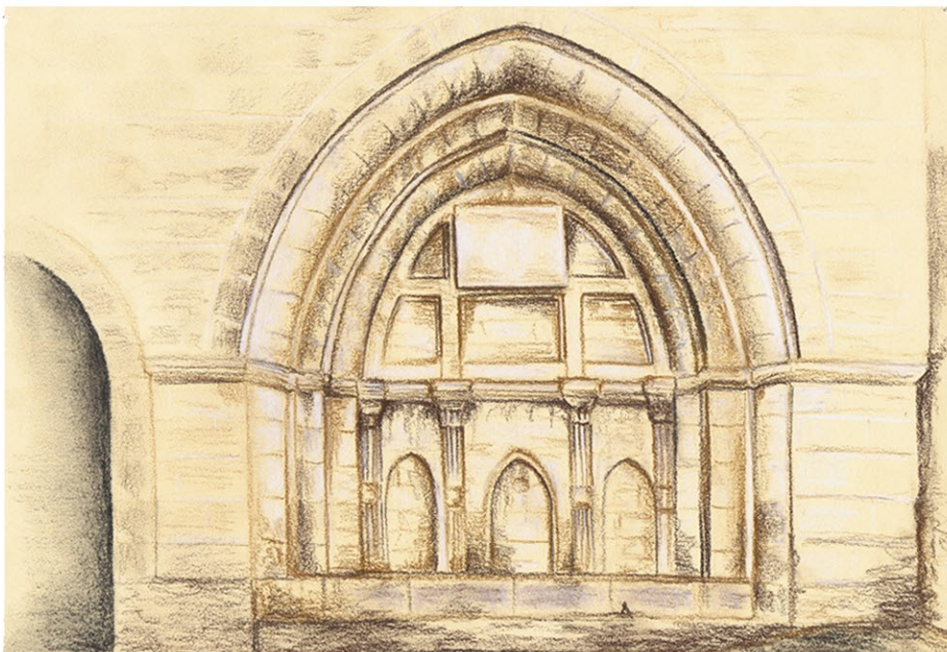
# TEL AVIV ALTERNATIVE #20



*Urban Screening*  
2008, mixed media



# TEL AVIV ALTERNATIVE #21



***Yafa Scenes (sketches)***

2009, crayons on paper, 15X21cm